

A woman with dark hair, wearing a grey blazer, stands with her arms crossed in front of a wall covered in various posters and records. The posters include one for 'THE LAST MIGHTY RESISTANCE' and another with a colorful illustration. Records are visible in the top left corner.

Amicus

University of Colorado Law School

Fall 2015

Engaged



WELCOME TO THE CLASS OF 2018

| | | | |
|-------|-------------------------|-----|------------------------|
| 2,383 | Applications | 138 | Undergraduate colleges |
| 205 | Class size | 40 | States |
| 161 | LSAT score (median) | 30% | Colorado residents |
| 3.60 | Cumulative GPA (median) | 47% | Women |
| 17% | Diverse students | | |

Statistics as of the first day of class, August 24, 2015

VOLUME XXXI, NUMBER 2, FALL 2015
ENGAGED SCHOLARSHIP

| | |
|---------------------|----|
| Dean's Letter | 2 |
| Engaged Scholarship | 4 |
| Faculty | 9 |
| Students | 14 |
| Research | 16 |
| Development | 18 |
| Alumni | 23 |

Electronic copies available at colorado.edu/law/alumni.

Inquiries regarding content contained herein may be addressed to Colorado Law, Attn: Amicus, 401 UCB, Boulder, CO 80309 or to lawalum@colorado.edu.

Editor-in-chief: Keri Ungemah.

Editing: Al Canner and Keri Ungemah.

Writing: Kristen Carpenter, Marci Fulton, Franz Hardy, Ellen Goldberg, Molly Hogan, Sean Keefe, Dayna Bowen Matthew, Joanna Schmitz, Mary Beth Searles, Marcia Segall, Keri Ungemah, Nancy Walker, and Phil Weiser.

Design and production: Sa ron Park Studio.

Photography

T *Amicus*

IN THE NUMBERS

#1

Boulder's rank for places to start a business in 2015
(Forbes)

#18

University of Colorado Boulder's national rank for most entrepreneurial university in 2015 (Forbes)

#4

Colorado Law's national rank for financial aid
(Business Week)

101%

Percentage increase in scholarship funding to students between fiscal years 2011 and 2015

#1

Denver's rank for best place for business and careers in 2015 (Forbes)

#10

Colorado Law's national rank for helping law students network and find a job (Business Week)

#29

Colorado Law's national rank in law faculties' scholarly impact (Business Week, American Society of Legal Education)

10%

Percentage increase in applications to Colorado Law 2014 to 2015 (nationwide applications down two percent in the fifth consecutive year of declines)

4%

Percentage of Colorado Law's funding from the state of Colorado

0%

Percentage increase in Colorado Law's tuition in the past four years

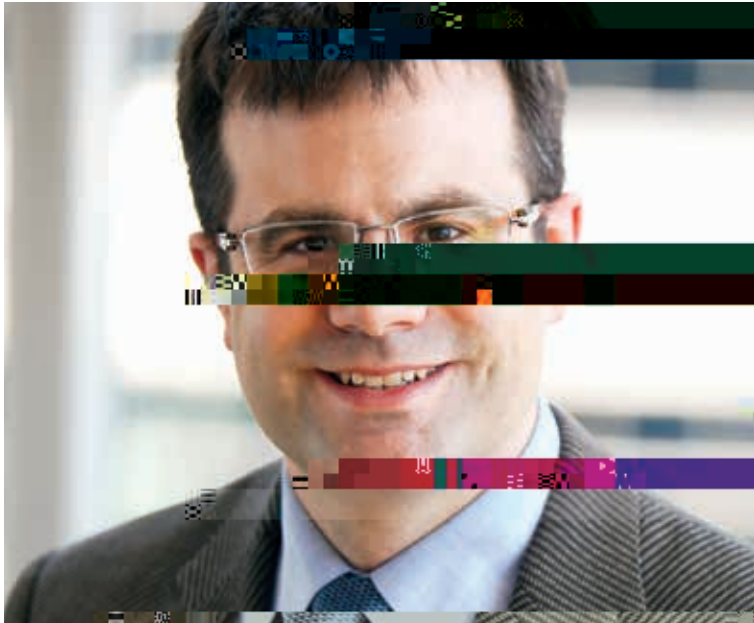


I
 B

A B
 10 9 (7.9 ()-5 1()12)8 ()138 . . F (10.)1-6 ()4 ()4 (()6 (,) () (I)39 ()-5 ()18)2. 5 ()-5 . 1 ()12()) A6. 6. 85

NEW TAX PROFESSOR JOINS FACULTY

Sloan Speck, a new tax professor, has joined the faculty of the College of Business Administration at the University of Chicago. He is currently an associate professor at the University of Chicago Law School and a senior advisor at the U.S. Treasury Department. He received his JD from the University of Chicago and his BA from the University of Michigan. He is also a past president of the American Tax Association and a past president of the American College of Tax Counsel. He is currently a senior advisor at the U.S. Treasury Department and a senior advisor at the U.S. Department of Justice. He is also a past president of the American Tax Association and a past president of the American College of Tax Counsel.



Sloan Speck

MATTHEW EARNS PRESTIGIOUS POLICY FELLOWSHIP

Rachel Matthews, a policy fellow, has earned a prestigious fellowship from the Brookings Institution. She is currently a senior advisor at the U.S. Treasury Department and a senior advisor at the U.S. Department of Justice. She received her JD from the University of Chicago and her BA from the University of Michigan. She is also a past president of the American Tax Association and a past president of the American College of Tax Counsel. She is currently a senior advisor at the U.S. Treasury Department and a senior advisor at the U.S. Department of Justice. She is also a past president of the American Tax Association and a past president of the American College of Tax Counsel.



Dayna Bowen Matthew

LECTURES CONNECT THE COMMUNITY TO SCHOLARSHIP

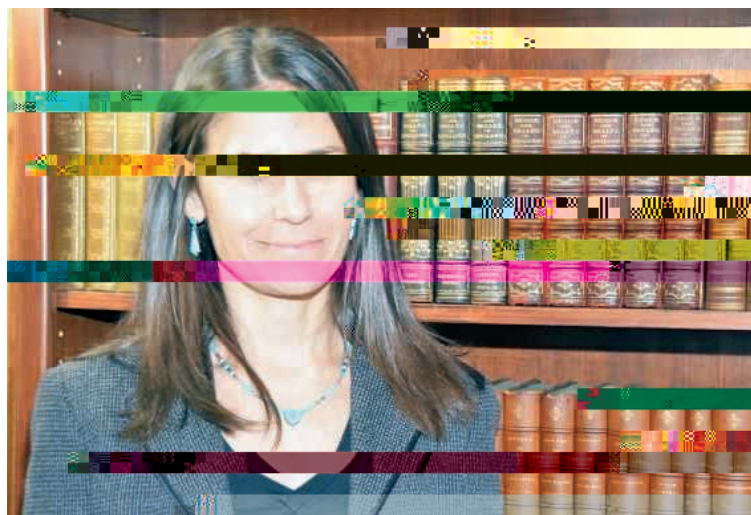
When you think of a lecture, you probably think of a professor standing at a podium in a lecture hall, addressing a group of students. But at the University of Utah, lectures are a much broader and more diverse phenomenon. They are a vital part of our academic life, connecting the community to scholarship in a way that is both meaningful and impactful.

Dr. [Name] is a leading expert in the field of [Field]. His research has been instrumental in advancing our understanding of [Topic].

In 2015, the University of Utah will host a series of lectures that will bring together some of the most prominent scholars in the world. These lectures will cover a wide range of topics, from the latest in scientific research to the most pressing issues in public policy.

SCOTT LECTURERS

| | | | |
|------|----------|------|----------|
| 2015 | K. C. | 1993 | |
| 2014 | H. | 1992 | C. D. |
| 2013 | A. J. | 1991 | D. H. G. |
| 2012 | A. G. | 1990 | D. |
| 2011 | C. | 1989 | |
| 2010 | | 1988 | C. |
| 2009 | A. | 1987 | C. F. |
| 2008 | D. B. | 1986 | D. B. |
| 2007 | K. | 1985 | J. F. |
| 2006 | H. H. B. | 1984 | E. C. |
| 2005 | | 1983 | C. H. |
| 2004 | G. | 1982 | A. D. |
| 2003 | B. C. | 1981 | F. |
| 2002 | K. | 1980 | A. A. |
| 2001 | C. | 1979 | |
| 2000 | H. | 1978 | |
| 1999 | F. | 1977 | F. |
| 1998 | J. | 1976 | A. H. J. |
| 1997 | J. D. H. | 1975 | H. K. |
| 1996 | B. A. B. | 1973 | H. C. C. |
| 1994 | D. | | |



Kristen Carpenter will deliver the Scott Lecture on October 8, 2015.

COEN LECTURERS

| | | | |
|------|----------|------|----------|
| 2015 | D. K. | 1984 | C. B. J. |
| 2014 | | 1983 | B. G. |
| 2013 | A. H. | 1982 | E. F. |
| 2012 | G. | 1981 | A. H. J. |
| 2011 | E. J. | 1980 | |
| 2010 | C. | 1979 | I. |
| 2009 | J. G. | 1978 | J. B. |
| 2008 | | 1977 | E. |
| 2007 | E. C. | 1976 | B. B. |
| 2006 | F. | 1975 | B. B. |
| 2005 | C. | 1974 | G. C. |
| 2004 | C. | 1974 | A. |
| 2003 | H. | 1973 | J. F. |
| 2002 | A. E. | 1972 | E. |
| 2001 | J. G. | 1971 | K. |
| 2000 | B. | 1970 | J. |
| 1999 | C. B. | 1969 | E. C. |
| 1998 | | 1968 | F. C. |
| 1997 | A. K. | 1967 | G. G. |
| 1995 | A. | 1966 | B. K. |
| 1994 | J. C. C. | 1965 | J. F. |
| 1993 | F. J. | 1964 | J. |
| 1992 | A. A. | 1963 | E. C. |
| 1991 | | 1962 | |
| 1990 | A. | 1961 | E. |
| 1989 | A. B. | 1960 | D. |
| 1988 | G. H. J. | 1959 | |
| 1987 | K. G. | 1958 | G. D. |
| 1986 | A. F. | 1957 | F. E. |
| 1985 | H. E. | | |

ASKING THE HARD QUESTIONS

E A a G be C I G

A D...-6()4...5. 212(), 5(, 24)18D.C. ()5 () J4 (,)12(6(33()-5(()0.5)9(,))9()4 7()

HONORING ESTEEMED FACULTY

C. ... H. H. B. ... C. ...
 E. ... C. ...
 C. ...
 D. ... B. H.
 B. D. B. A. ...

PROFESSOR HAL BRUFF

15-16, 2015, ...
 H. B. ...
 B. ... *Untrodden Ground: How Presidents Interpret the Constitution.*

B. ... C. ... C. ... 1996
 F. ... (1996-2003) ...
 B. ...
 B ()-10 (-)-6 .)9 ()19 ()12 ()13 . . .

PROFESSOR ROBERT NAGEL

... A 7-8, 2016, ...
...
... C... 1975. ...
... D...
... J...

... C...
... C...

I 2003, ...
... A ... A ... A ...
(AAA). ... 10 ...
AAA ...

... A ...

CONVERSATIONS WITH NATIONAL SCHOLARS

TEAM PROVES ENTREPRENEURIAL MINDSET

A team of four students from the University of California, Berkeley, has proven its entrepreneurial mindset by launching a successful startup, *401K F*. The team, consisting of Bradle Sad ('17), Ahn Sei ('17), Kelvin Shucke ('17), and Kii Yae ('17), has raised over \$1 million in funding from investors in Silicon Valley, including TechCrunch and Entrepreneur. Their startup, which provides a platform for students to find and hire part-time workers, has been featured in *Forbes*, *Business Insider*, and *Entrepreneur*.

The team's success is a testament to their hard work and entrepreneurial spirit. They have managed to build a strong network of investors and partners, and their platform has gained significant traction among students. Their story is an inspiration for other students who are looking to start their own businesses.

The team's success is a testament to their hard work and entrepreneurial spirit. They have managed to build a strong network of investors and partners, and their platform has gained significant traction among students. Their story is an inspiration for other students who are looking to start their own businesses.

FACULTY RESEARCH: ADVANCING KNOWLEDGE AND ENGAGING THE WORLD

By Kristen A. Carpenter, Associate Dean for Research and Professor

Faculty research is a vital part of the academic mission. It allows us to explore new ideas, challenge existing knowledge, and contribute to the advancement of our fields. At the University of Michigan, we have a rich tradition of research that has shaped the world in many ways. From the discovery of penicillin to the development of the internet, our faculty members have made significant contributions to human knowledge and progress.

Faculty research is also a key component of the educational experience. By staying current in their fields, our faculty members can provide the most relevant and up-to-date instruction to our students. Research also allows us to engage with the broader community and address the most pressing issues of our time. Through our research, we can better understand the world and work to create a more just and equitable society.

Faculty research is a complex and multifaceted endeavor. It requires a deep commitment to the pursuit of knowledge and a willingness to challenge the status quo. It also requires a strong support system, including funding, resources, and a collaborative environment. At the University of Michigan, we are committed to providing our faculty members with the best possible conditions for research and to supporting their efforts to advance knowledge and engage the world.

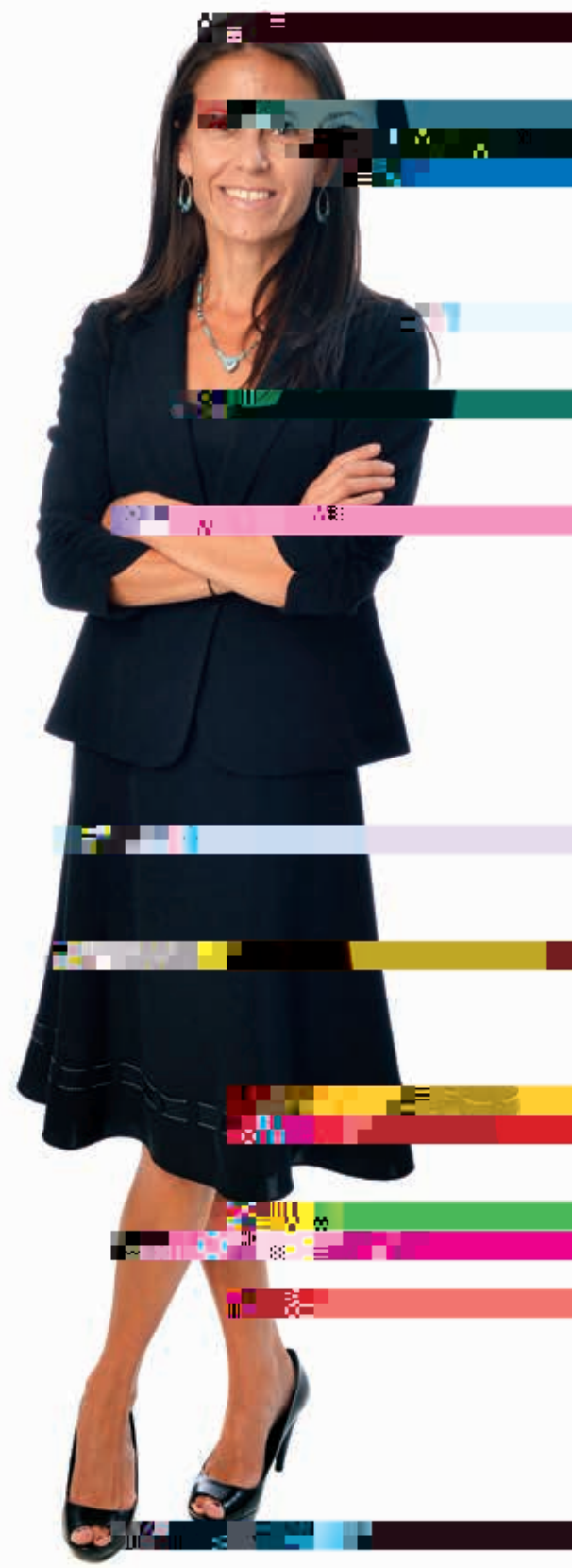
Faculty research is a vital part of the academic mission. It allows us to explore new ideas, challenge existing knowledge, and contribute to the advancement of our fields. At the University of Michigan, we have a rich tradition of research that has shaped the world in many ways. From the discovery of penicillin to the development of the internet, our faculty members have made significant contributions to human knowledge and progress.

¹ ... at *Noble Dream: The "Objectivity Question" and the American Historical Profession* (1988), ... C. A. K., ... *Yale Journal of Law & Feminism* (2010).

² ... K., ... *Yale Journal of Law & Feminism* (2010).

³ H. D., ... K., ... C., ... *Cornell Law Review* (2011).

⁴ ... K.K., ... E., ... E., ... *Touro Law Review* (2015).



ALEXIA BRUNET MARKS, SCOTT MOSS, *Wall Street Journal*,
ONLINE: blogs.wsj.com/law/2015/07/13/new-study-tries-to-predict-law-school-grades/

WILLIAM BOYD, G. C. F. (GCF), B. I. C. 29
ONLINE: gcftaskforce.org

AYA GRUBER, H. A. C. G. F. H. I. C.

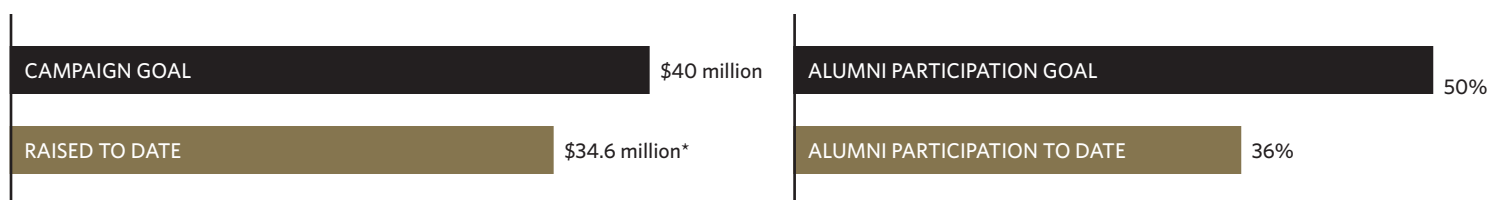
THE CAMPAIGN FOR COLORADO LAW'S FUTURE

OUR CAMPAIGN

The Campaign for Colorado Law's Future was started in 2011 to support the "human capital needs" of our law school and to ensure its continued excellence and ability to innovate. Specifically, our goal was to raise \$40 million to support scholarships, loan repayment assistance, faculty, and critical programs. We also set a goal of having more than 50 percent of our alumni participate in the campaign.

We are nearing the end of our campaign, but we need your help to close it.

OUR PROGRESS



WHAT WE STILL NEED

Amount needed to reach
our campaign goal



Number of alumni needed
to reach our participation goal



DONATE TODAY

We need your help to meet our goal of raising \$40 million and having support from the majority of alumni. A gift of any amount will count. Please donate today at cufund.org/lawdean.

CONTACT

If you would like more information on how you can participate in the Campaign for Colorado Law's Future, please contact **Mary Beth Searles**, assistant dean for development, at marybeth.searles@colorado.edu or 303.492.1215.

* This number includes gifts and pledges, plus 50 percent of the value of all revocable planned gifts received during the campaign.

GIVING SOCIETY

IRA C. ROTHGERBER JR. SOCIETY

\$100,000+

H
J. H.

\$50,000-\$99,999

B. F. A. B.
E. B. C.
C. C.
K.

\$25,000-\$49,999

B.
C. J. K.
B. K. D.
C. E.
J. G. J.
C.
J. J.
G. K. E.
B.
H.
C.

\$10,000-\$24,999

A. D.
A. B.
A. B.
H. B.
B. B.
C.
D. C.
C.
B. C.
D.
F.
J. F.
G.
H. J. G.
K. H.
J.
D.

H 0()83 (. 19 ()6 (.) B)8 ()13 ()16 04 ()8 19 ()9 ()6 (.)4 (0()83 (. H(H)25 J()4 (B)-8.9 () J12 (. .)-6()-17 .)1*(H (D)44 ()3 (.)

CORPORATIONS AND FOUNDATIONS

\$100,000+

A... G... I...
D... F...
G... F...
... 3 C... I...
... F...

\$50,000-\$99,999

... C...
B... H... E...
C...
C... C...
... C... &...
A...
... E... F...

\$25,000-\$49,999

A... G... B...
A... &...
C... I...
G... F... F...
H... & H...
... D... F...
... F...

\$10,000-\$24,999

A... G... H... & E...
A... C... C...
B... H... G... &...
B... C...
C... I...
C... C...
C... H... B... A...
C... A... 9()-1... G... (-)5()(-)4.9...-8(16()4(I)372()4()5I ()H()4. ()-9... D... H... 9.1... *(B)... I... E6()1()... A... (A... (9)10()6()12... 6... I...

SUPPORTING FACULTY SCHOLARSHIP

G... G... B... C... H... I... C... G... J... A...

I... G... I... A...

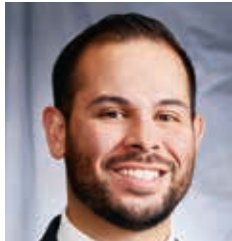
G... J... A... \$20,000
 2015... Mel Je... (15), 1 (.)5.95 ()11 ()13 ()6... 7 6... 1... 0... 9 1... 1(.) / () J)-6 ()9 () 9...
 ()8 (.)-I... 5 (.)... ((. 12 (.)-3 ()6)-5.7.)9 ()461... ()8

RECENT ALUMNI GIVE ADVICE

Recent alumni from the Colorado Law Promising Start series answer the question, "What advice would you give to current students with respect to finding a job?" Read more in the Promising Start series at colorado.edu/law/promisingstarts.



Stockmayer ('11)



Abbas ('13)



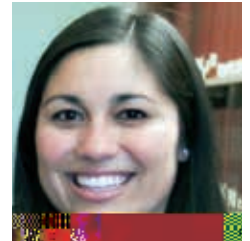
Cannon ('13)



Prato ('12)



Johnson ('13)



Luna ('13)

Gabriella Stockmayer ('11)
Energy & Water Lawyer
Dietze & Davis, P.C.

"Ask mentors for connections and follow up. These are the people who are most interested in helping you find a great opportunity. They will advise you of contacts and advocate for your cause. Be sure to follow through with contacting anyone they suggest. Stay in close contact with your mentor(s) through the process."

Javed Abbas ('13)
Family Law Attorney
Harris Law Firm

"Connect with the Career Development Office as soon as you are comfortable with the pace of law school. They are an outstanding resource, and they want to help you. Look for opportunities to interact with practicing attorneys. I still have not met an attorney who is unwilling to help a law school student or a new attorney. Keep an open mind regarding the areas of law you are interested in. There are many interesting opportunities out there, and I think it makes sense to be mentally prepared to take advantage of any opportunity that you can find."

Sam Cannon ('13)
Judicial Clerk and Entrepreneur
Cannon Law

"Work out what you want to do and go after it. It is easy in law school to get sucked in to chasing what everyone else thinks is best. I would encourage students to avoid that. Really think about what you enjoy and what you find interesting. Once you know what you are interested in, it will come across when you meet other attorneys. That will make your job search and networking efforts much more successful."

Lisa Prato ('12)
Deputy District Attorney
11th Judicial District of Colorado

"Be open-minded about what kinds of opportunities you will pursue. It is very easy to get caught up thinking about where you want to be without acknowledging all of the diverse paths that could lead you there. A first job is a launch point, and in a competitive market, you must determine how you can be flexible and creative to get your start."

Richard Johnson ('13)
Associate General Attorney
Ball Corporation

"Do as many internships as you can. Explore different areas of the interests by your 2L summer. If you know what you like to do by your 2L summer or your 3L year, find an internship at a place where you would like to work full time after graduation. Many of my classmates now have full-time jobs at the places where they did their internships."

Luna Luna ('13)
Deputy District Attorney
11th Judicial District of Colorado

LETTER FROM THE ALUMNI BOARD CHAIR

Franz Hardy ('00)



Dear Colorado Law Alumni,

I am pleased to announce that the 2015-16 Board Chair is Franz Hardy and the chair-elect is Lucy Stark.

The Law Alumni Board is made up of 28 Colorado Law graduates. The members promote the best interests of the law school by stimulating interest in, building loyalty for, and increasing support for the law school among its alumni and students, and assisting the law school in serving the needs of its alumni, students, and faculty, the legal profession, and the public at large.

The 2015-16 Board Chair is Franz Hardy and the chair-elect is Lucy Stark.

Nikea Bland ('05), O'Malley Law Office
 Bethiah Beale Crane ('79), Crane & Tejada PC
 Darla Daniel ('01), Colorado State Bank and Trust
 Eric Elli (Past Chair) ('87),
 Judge, Denver District Court, 2nd Judicial District
 W. Harold "Sonny" Flowers Jr. ('71),
 Hurth, Sisk & Blakemore LLP
 Mark Fogg ('79), COPIC
 Chris Gaddis ('04), JBS USA Holdings, Inc.
 Richard Gast ('81), Gast Johnson & Murray, PC
 Hugh Gottschalk ('79), Wheeler Trigg O'Donnell LLP
 Marc H. Graboyes ('96), CytoBiotics, LLC
 Sarah Heck Grinn ('84), Jones Day
 Franz Hardy (Chair) ('00),
 Gordon & Rees LLP
 Marisa Hudson-Arney ('01), Condit Csajaghy LLC
 Carolyn McIntosh ('81), Squire Patton Boggs
 Richard Murray ('07), Polsinelli PC
 Ben M. Ochoa ('87), Lewis Roca Rothgerber LLP
 Greg Ramos ('92), Sherman & Howard L.L.C.
 Siddhartha Rathod ('07), Rathod | Mohamedbhai LLC
 Meshach Rhoades ('04), Armstrong Teasdale LLP
 Ann M. Roan ('89), Colorado State Public Defender
 Regina M. Rodriguez ('88), Faegre Baker Daniels LLP
 Michael R. Savage ('96), U.S. Trust
 Lance Sears ('75), Sears & Associates, PC.
 Lucy Stark (Chair-Elect) ('98), Holland & Hart LLP
 David Steefel ('78), Retired
 Amber Tafoya ('02), AT&T
 Andrea Wang ('01), Davis Graham & Stubbs LLP
 Maureen Weston ('92), Pepperdine University School of Law

Law Alumni Board

The Law Alumni Board is made up of 28 Colorado Law graduates. The members promote the best interests of the law school by stimulating interest in, building loyalty for, and increasing support for the law school among its alumni and students, and assisting the law school in serving the needs of its alumni, students, and faculty, the legal profession, and the public at large. The 2015-16 Board Chair is Franz Hardy and the chair-elect is Lucy Stark.

- Nikea Bland ('05), O'Malley Law Office
- Bethiah Beale Crane ('79), Crane & Tejada PC
- Darla Daniel ('01), Colorado State Bank and Trust
- Eric Elli (Past Chair) ('87),
 Judge, Denver District Court, 2nd Judicial District
- W. Harold "Sonny" Flowers Jr. ('71),
 Hurth, Sisk & Blakemore LLP
- Mark Fogg ('79), COPIC
- Chris Gaddis ('04), JBS USA Holdings, Inc.
- Richard Gast ('81), Gast Johnson & Murray, PC
- Hugh Gottschalk ('79), Wheeler Trigg O'Donnell LLP
- Marc H. Graboyes ('96), CytoBiotics, LLC
- Sarah Heck Grinn ('84), Jones Day
- Franz Hardy (Chair) ('00),
 Gordon & Rees LLP
- Marisa Hudson-Arney ('01), Condit Csajaghy LLC
- Carolyn McIntosh ('81), Squire Patton Boggs
- Richard Murray ('07), Polsinelli PC
- Ben M. Ochoa ('87), Lewis Roca Rothgerber LLP
- Greg Ramos ('92), Sherman & Howard L.L.C.
- Siddhartha Rathod ('07), Rathod | Mohamedbhai LLC
- Meshach Rhoades ('04), Armstrong Teasdale LLP
- Ann M. Roan ('89), Colorado State Public Defender
- Regina M. Rodriguez ('88), Faegre Baker Daniels LLP
- Michael R. Savage ('96), U.S. Trust
- Lance Sears ('75), Sears & Associates, PC.
- Lucy Stark (Chair-Elect) ('98), Holland & Hart LLP
- David Steefel ('78), Retired
- Amber Tafoya ('02), AT&T
- Andrea Wang ('01), Davis Graham & Stubbs LLP
- Maureen Weston ('92), Pepperdine University School of Law

PHOTO, LEFT TO RIGHT: Chair-elect Lucy Stark ('98), immediate past-Chair Laura Sturges ('05), and Chair Franz Hardy ('00) celebrate at the 34th Annual Colorado Law Alumni Awards Banquet. Join us for the 35th Annual Banquet on Wednesday, March 9, 2016.

IN MEMORIAM

WALTER E. BLISS ('42) ... K. ... P. ... 7, 2015. A ... B ... FBI. ... 1945, B ... H ... 35 ... B ... H ... A ... H ...

PATRICK M. WESTFELDT ('48) ... F. ... 2015. ... II ... A ... B ... C ... H ... & H ... H ...

BURDETTE FLOYD "CHIP" BACKLUND ('49), ... H ... I ... A ... 29, 2015. D ... II, B ... H ... B ... D ... I ... H ... I ... H ... I ... B ... A ... I ... C ... B ... A ... A ... B ... F ... B ... C ... 1986, 1992. ... H ... C ... B ...

JOHN B. KUHLMAN ('49) ... J. ... 8, 2015. H ... J ... C ... K ... C ... K ...

NORMAN RAY NASHAM JR. ('49) ... J. ... 4, 2015, ... G ... I ... A ... C ... I 1950, ...

EDGAR W. WHITE ('50), ... K ... A ... 10, 2015. ... 60 ... E ... K ... H ... 1953. ...

JAMES L. BRUIN ('52), ... J. ... 7, 2015. A ... A ... A ... C ... B ... C ... B ... H ... C ... H ... B ...

ROBERT KILLEFER JR. ('55) ... K ... P. ... 8, 2015. K ... A ... F ... 1959. H ... FBI ... 1959. ... 1965. H ... F ... B ...

... D. ... F. ... B ... 1996. K ...

FREDERICK WARNER JR. ('59), ... J. ... 4, 2015. A ... D ... E ... A ...

WILLIAM "BILL" G. KEMP ('60) ... J. ... 8, 2015. K ... D ... H ... 54 ... K ...

JOHN SHEPARD MOORE ('62) ... 31, 2015, ... B ... A ... F ... A ... F ... H ... D ... B ... 30 ... 1998. ...

WILFRED KIYOSHI IWAI ('66), ... H ... 73. H ... H ... H ...

RUSSELL O. OLIN ('67), ... J. ... 31, 2015. A ... BA. ... C ... *Lamar Daily News*, ... *Pueblo Chieftain*, ... *Wheat Ridge Advocate*. I 1959, ... *Colorado Alumnus*. F ... 1967, ... 8 468 ... 8.9 (K) 3 (L -5) 11 (...

Alexander H. ... H. ... A. ... H. ...
... H. ...
E. ... E. ... C. ... H. ... C. ... Jeremy Lakin
... H. ... H. ...

Robin Lutz Beattie ... F. ... &
B. ... C. ... 2007. B. ...

Jacki Cooper Melmed ... C. ... G. ... J. ... H. ...
... C. ...
... G. ... C. B. ...

Mark Detsky, ... J. ... 18, 2015,

... & A... C... Erica Olson Payne...

Christa Lee Rock... G... & ...

Marnie C. Adams... C... A...

Joan S. Allgaier... H... & E... C...

... D... B... A... Sarah M. Clark... 2015-16 B...
... C... B... H... E...
... C... 2...
...
...

Thomas D. Kranz... D... J...
... & K... C...

Richard M. Murray... C... E...
... A... 8, 2015...

... D

Brian T. Wolf, B.S., B.S., C.S., A.S., B.S., D.S., C.S., A.S.

Christopher M. Achatz, B.S., C.S., B.S., A.S.

Dan Fredrickson, C.S., D.S., E.S., 20, 2015, C.S., 19.5, 7, 5, F.S., K.S., K.S., & C.S.

Samantha Pjesky, K.S., K.S., & C.S.

C.S., I.S., Mike Weinheimer, 13.1 (0.1950.005.0527.27.648) 0.5

() 1 () 8 4 ()) 7 () 1 7 ((0) 8 ()) 7 () 1 ()

ALUMNI OF THE MONTH



What advice would you give to graduates?

"Practical experience is the best teacher, even if difficult or unpleasant at the time. Whichever area of the law you select, it is important to seek out challenging experiences. And, always be bigger than the moment."

Matt Bond ('86)

Executive Vice President of Content Distribution
NBCUniversal

Of which accomplishment are you most proud?

"Ending my career helping our wounded warriors"

Who was the biggest influence on your career?

"Brooke Wunnicke ('45) was the biggest influence on my career. Had I not met Brooke and learned at her knee, I may have given up when facing obstacles that could have easily blocked my path and career growth."

Velveta Golightly-Howell ('81)

Director of the Office of Civil Rights
Environmental Protection Agency

What advice would you give to graduates?

"Your career may take unexpected turns, and you should be open to new practice areas and experiences. I did not set out to be a franchise attorney; I just knew I wanted to be a transactional attorney. I started out doing litigation, then corporate and mergers and acquisitions and I still use much of what I learned early on in my franchise and trademark practice today."

Lynne Hanson ('88)

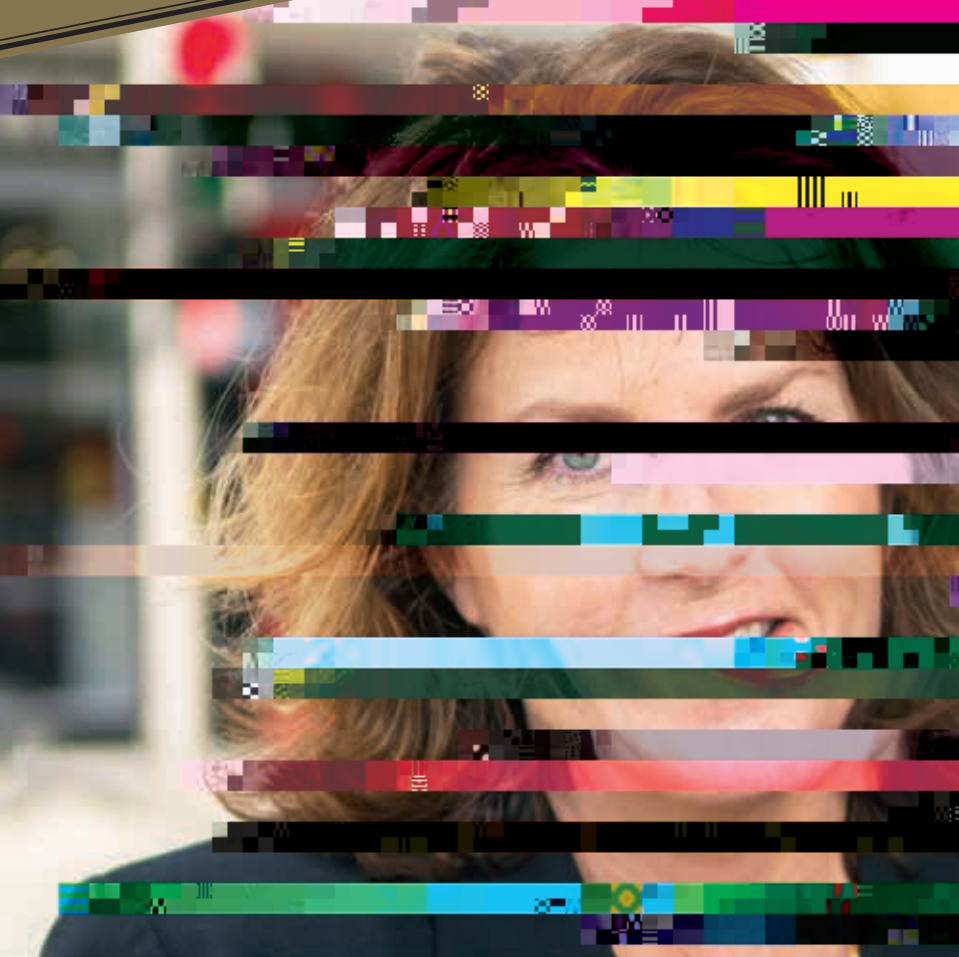
Business Attorney
Moye White LLP

"Before my husband, David, became ill, he and I set up a charitable gift annuity to benefit the scholarship established in his name. We had been fortunate with a stock investment, and a gift annuity allowed us to avoid capital gains tax, guarantee a bit of future income, and give to Colorado Law all at the same time. Because the school has given so much to us—and especially to David—we were happy to do it."



ON SFO ES AB SV N G O EGAC A CO O ADO AW

"I designated Colorado Law as a partial beneficiary of my 401(k) after my death. Making a charitable gift to Colorado Law using taxable retirement accounts is a great tax-pl9211-4.2ool."



University of Colorado Law School
2450 Kittredge Loop Road
401 UCB
Boulder, CO 80309

Nonprofit
U.S. Postage Paid
Boulder, CO
Permit No. 156